



### 7.1.2 The Institution Has Facilities and Initiatives For

1. Alternate sources of energy and energy conservation measures
2. Management of the various types of degradable and non-degradable waste
3. Water conservation
4. Green campus initiatives
5. Disabled-friendly, barrier free environment

#### RESPONSE

1. Alternate sources of energy and energy conservation measures

#### Solar Energy

Present day need and trend is utilizing green source of energy to reduce carbon footprint with sustainable future. In this regard INDIAN government is also encouraging the same with subsidies. Better late than ever, it's time to protect the nature by utilizing green energy in place of fossil fuels. In this aspect, BVIOM is taking the lead to reduce carbon emissions by utilizing some portion of energy from solar.

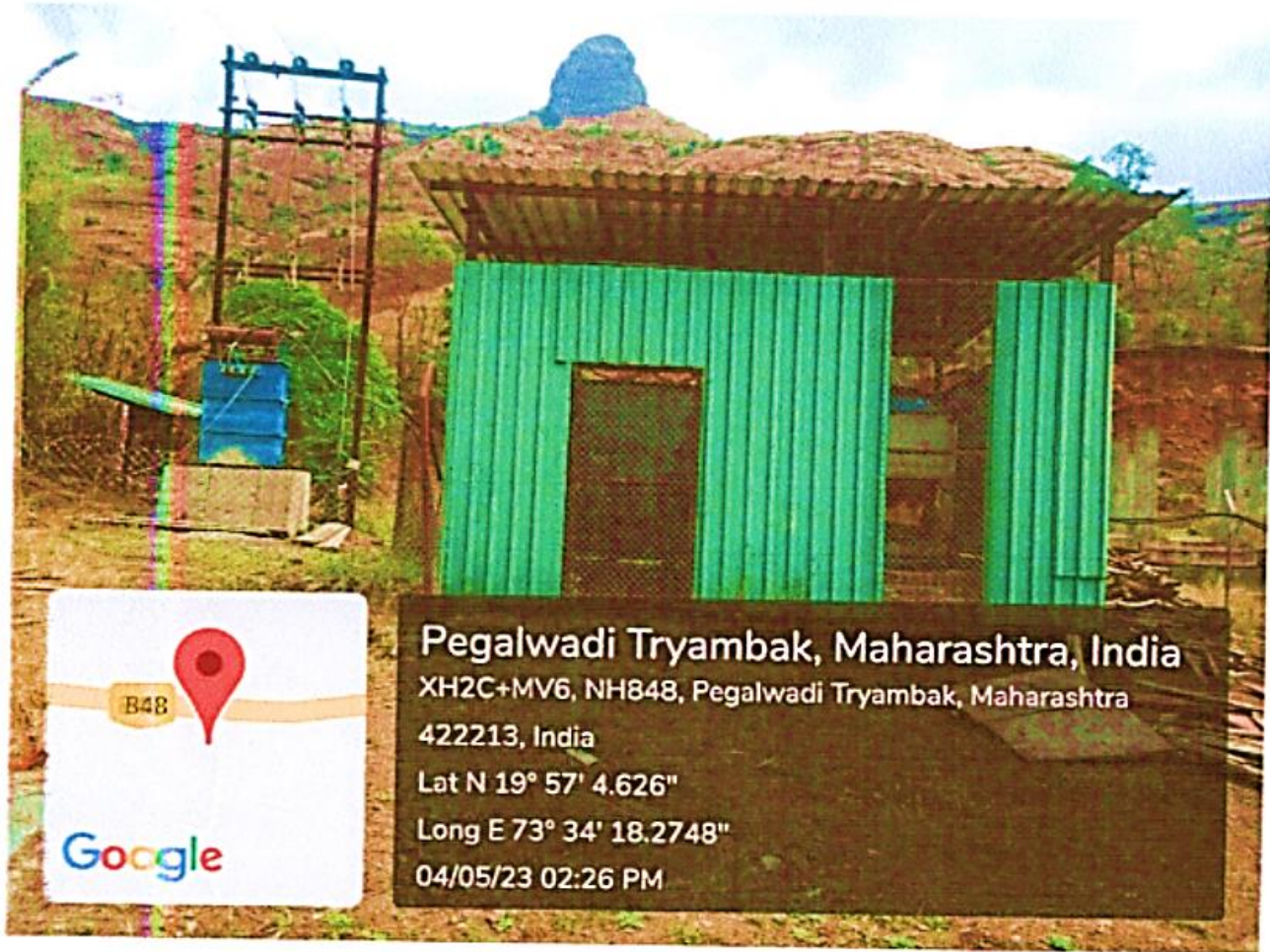


**Solar Energy**



**Express Feeder line and Transformer:**

**A Special line for B.V.I.O.M Nashik Campus to meet the modern requirements.**

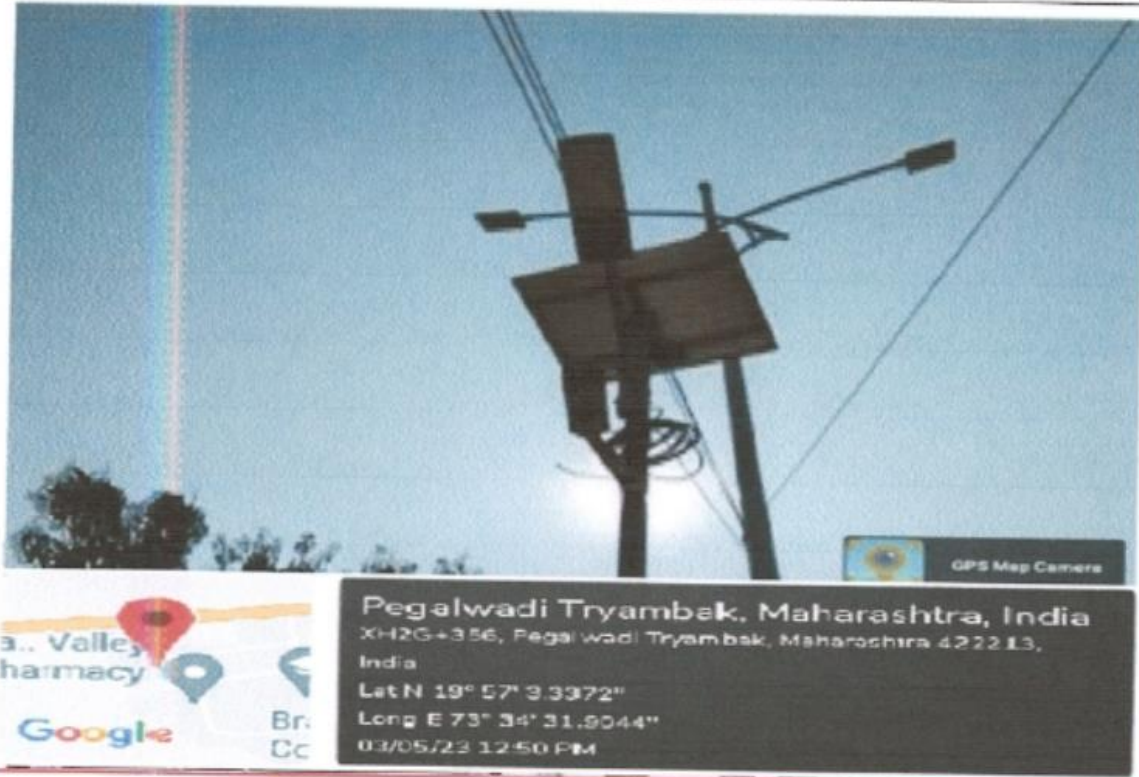


### **Special Express Feeder Electric Line and Special Transformer**

#### **Solar Lights and Energy Based Conversation**

We will be using solar panel and batteries to store and then convert solar energy to electrical which is to be used for street lighting system. During daytime, solar energy is stored and then depending upon natural light illumination in surrounding the array of LEDs glow using same convert solar energy.

Use of LED bulbs/ power efficient equipment. The college management has provided following facilities in conserving the energy and power efficient equipment Master Switches for each Room to shut down power of entire room when not in use. CRT monitors are replaced with LCD/LED monitors. The CFL fittings with higher rating wattage are replaced with LED fittings with lower wattage with the same luminous level in street Lights and other possible areas of Campus.



**Solar Street Lights and Energy Based Conversation**

## NET METERING CONNECTION



**Internet Special Connection RACKS and D.P.**



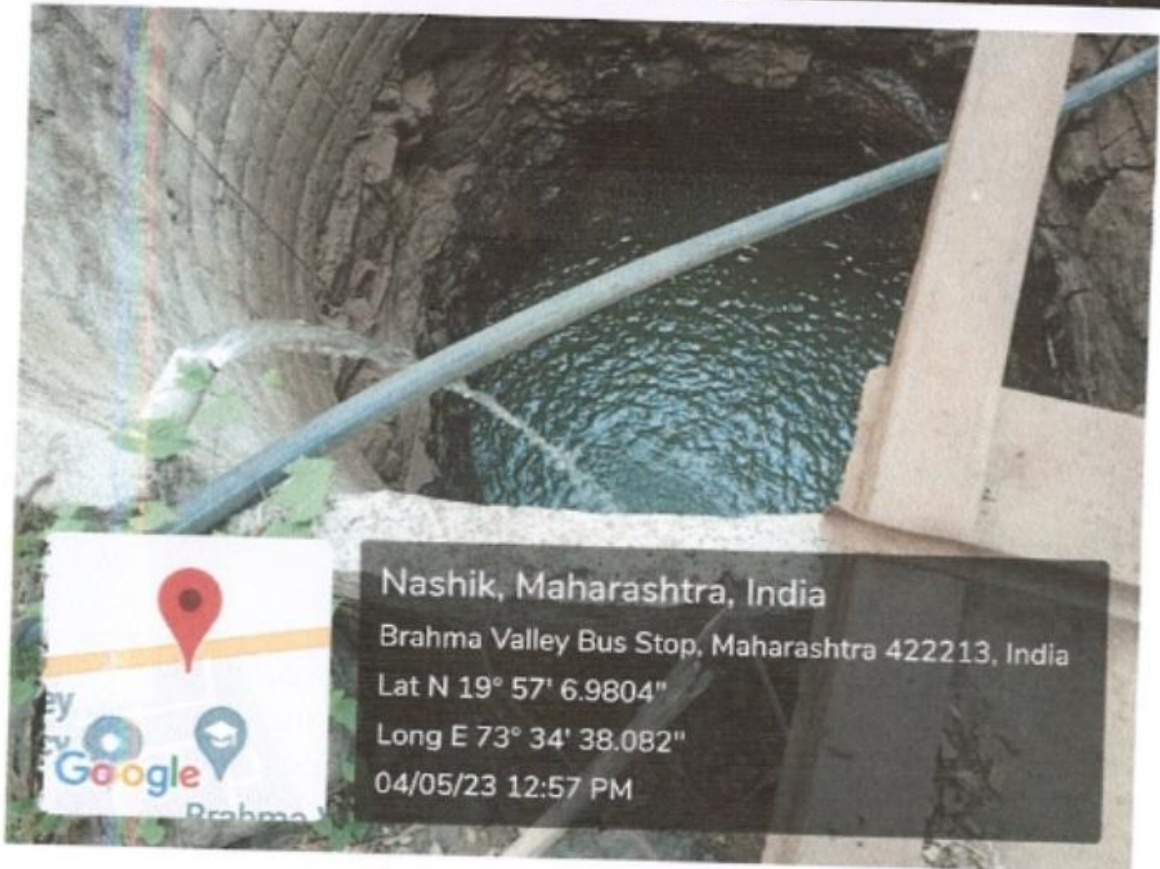
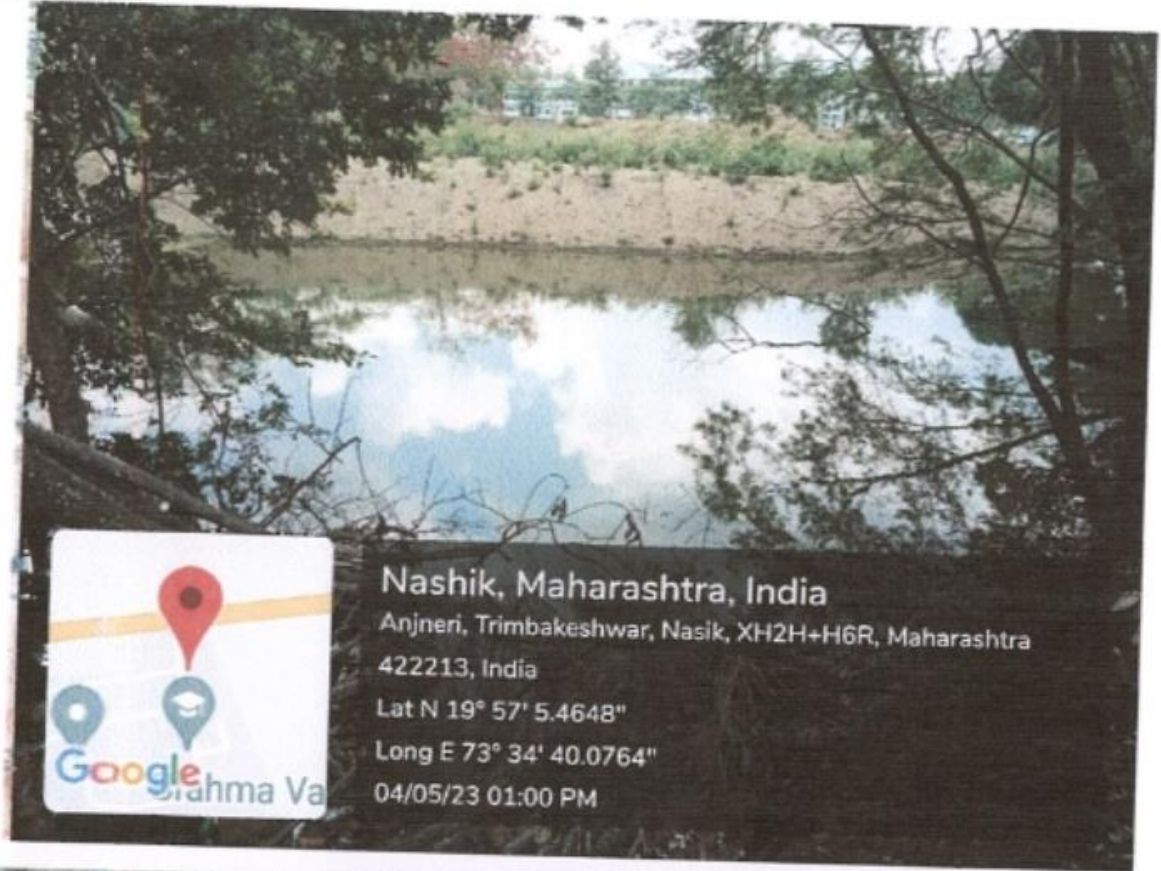
## 2. Management Of The Various Types Of Degradable And Non-Degradable Waste



**Waste Management**



### 3. Water Conservation



**Water Management – Small Lake and A Well**



NASHIK GRAMIN SHIKSHAN PRASARAK MANDAL'S

# BRAHMA VALLEY INSTITUTE OF MANAGEMENT

Approved by All India Council for Technical Education(AICTE),  
Directorate of Technical Education Government of Maharashtra & Affiliated to University of Pune





## 4. Green Campus Initiatives



**Tree Planation**



## 5. Disabled-Friendly, Barrier Free Environment



**Rampage for Disabled Students**